

LICA'S Latest

BIWEEKLY E-GRAM THAT CONTAINS
THE LATEST NEWS AND INFORMATION
VITAL TO LICA'S MEMBERS

August 18, 2009

LI Labor to Rally for Jobs Wednesday, Join Demonstration at Clare Rose HQs



It's about jobs, jobs, jobs.

Our region's unemployment lines continue to be filled by Long Island construction workers who would rather be building our region's roads, bridges and buildings than collecting unemployment checks. Regrettably, the Summer of 2009 will be remembered as a time of inaction, indifference and quiet desperation.

Our region has been hit hard by public works projects not being awarded, private sector work sites being shut down and work deferred by a recession that economists say is over, but no one on unemployment knows it. Adding insult to injury, several large construction projects that are moving forward are awarding the contracts to out-of-state firms and workers.

LICA is urging support of efforts by the Building & Construction Council of Nassau/Suffolk and the Long Island Federation of Labor, AFL-CIO to call attention to the loss of Long Island construction jobs to out-of-state firms. A demonstration will be held **tomorrow, Wednesday, August 19th** at 3:00pm, outside the Clare Rose Distributors headquarters, 255 Pinelawn Road (corner of Marcus Drive), Melville.

By way of background, Clare Rose, the largest Long Island-based wholesale beer distributor, is building a \$30 million distribution center in Yaphank. The region's sole distributor of Budweiser and other popular beer brands is outsourcing the construction jobs to non-union labor from other areas. The contract is being managed by a Kentucky-based prime contractor and the concrete work is slated to be performed by a Canadian firm.

For more information, please contact either LICA Executive Director Marc Herbst at 631-231-LICA (5422), Nassau/Suffolk Building Trades President Jim Castellane at 631-951-3315 or LI Fed Executive Director Roger Clayman at 631-348-1170.

IN THIS ISSUE

- LI LABOR TO RALLY FOR JOBS WEDNESDAY, JOIN DEMONSTRATION AT CLARE ROSE HQS
- LICA IS CENTER OF ATTENTION AS NATIONAL MEDIA LOOKS AT SLOW STIMULUS MONEY
- THE GLASS IS NEITHER FULL NOR EMPTY – IT'S BEING REVIEWED
- A DOLLAR DOESN'T GO AS FAR AS IT ONCE DID – AND WE ARE ALL THE POORER FOR IT
- URGENT TIME TO ADVOCATE REGION'S NEXT PROJECTS
- GCA HOSTS BID EXPRESS DEMO
- FORUM ON FUTURE OF LI TRANSPORTATION SET FOR SEPT. 25TH
- BID RESULTS



*The Voice of Long Island's
Highway & Infrastructure Professionals*

150 Motor Parkway
Suite 307
Hauppauge, NY 11788-5145

LICA Is Center of Attention as National Media Looks at Slow Stimulus Money

LICA was the lead interview during a recent Cable News Network (CNN) feature story on whether economic stimulus money is being put to work fast enough to accomplish its strategic mission. Washington, DC-based CNN correspondent Kate Bolduan was dispatched to meet with LICA executive director Marc Herbst, who asked probing questions about the slow progress of job creation through the federal American Recovery and Reinvestment Act (ARRA) program. Nearly half a year after President Obama signed the \$787 million stimulus package into law, the money is just only beginning to trickle down to actual construction jobs.

The coverage revealed that Long Island is finally receiving its first stimulus dollars in the middle of the construction season, with Bolduan being told that the region has only received \$1.7 million for a concrete repair job. Hardly the stimulus the White House had expected. LICA pointed out that the funding process has been mired in red tape and once additional projects are finally approved, the current construction season will be over. This sentiment is shared by other contractors throughout the nation. Please [click here](#) to view the news segment, which aired on CNN on August 6th.

The Glass is Neither Full nor Empty – It's Being Reviewed

Television has become one of the most revealing mediums in the history of communications. No matter how well prepared a subject can be, the unblinking eye of the camera can strip away the hype, the smoke and the spin.

Nevertheless, it was startling to see the state's top infrastructure-transportation advisor, Tim Gilchrist, tell CNN that Long Islanders will get the dollars it deserves and, when they do, they will complain about the inconvenience. On CNN he said, "From my perspective, the motorist on Long Island will be complaining about all the construction."

Realizing that his remarks were, at best, impolitic, the State's reaction came days later when Governor Paterson visited Long Island in what *Newsday* (8/4/09) described as an apparent bid to rebut criticism that the State is moving too slowly in funneling federal money to Long Island. Governor Paterson celebrated the ground-breaking of the second phase of the Route 112 project, awarded to LICA member Bove Industries, as a stimulus success story.

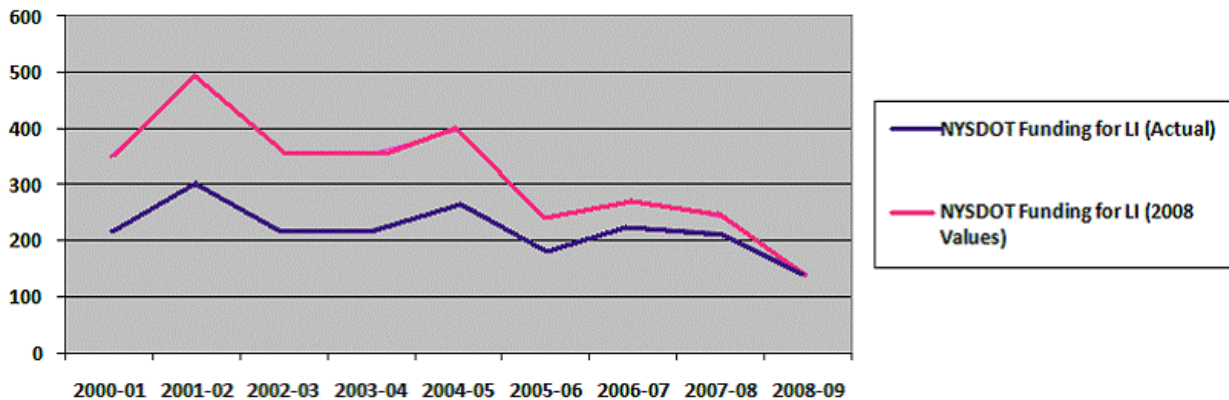
However, that road project was actually scrapped during last year's construction program due to Budget Directive B-1184 that froze job-creating construction projects. It is back on the calendar because of the newfound federal dollars.

According to *Newsday*, the federal Department of Transportation statistics show that New York State has been one of the nation's slowest when it comes to putting stimulus dollars on the street. Governor Paterson explained that the delay was because state officials are seeking to avoid the mistakes made by Louisiana and Mississippi, which had to return some of their federal aid after Hurricane Katrina because of sloppy accounting. "We want to make sure zero percent goes back to the federal government," Paterson explained.

(Continued on next page)

LICA will share this information with the members of the New York State Assembly and Long Island Senate delegations. We will urge them to consider this information when developing the next state capital program.

NYS DOT Funding for Long Island	Actual (in millions)	2008 Values (in millions)
2000-01	\$215.40	\$350.95
2001-02	\$302.20	\$490.58
2002-03	\$215.20	\$357.97
2003-04	\$218.10	\$359.09
2004-05	\$263.70	\$395.73
2005-06	\$181.10	\$241.47
2006-07	\$226.00	\$271.98
2007-08	\$213.00	\$242.31
2008-09	\$140.00	\$140.00



urgent Time to Advocate Region's Next Projects

In view of the ever shrinking dollar, today's fragile job market and an indifferent Administration in Albany, now is the time to speak out loudly for the infrastructure needs for our region. LICA members are strongly encouraged to let their voices be heard so that Long Island will receive its fair share in the upcoming state capital programs.

New York State Department of Transportation's Region 10 and the New York Metropolitan Transportation Council (NYMTC) staffs are meeting **tomorrow morning, Wednesday, August 19th at 11:00am** with Long Island's advocacy groups and stakeholders to discuss and hear your input for the critical surface transportation needs for the next 5 Year NYSDOT Capital Program. The meeting is at NYSDOT's Maintenance Facility (Residency 05),

(Continued on next page)

located at 1400 Walt Whitman Road, at North Service Road, Melville, NY 11747. Be part of LICA's representation at this important meeting!

The Metropolitan Transportation Authority has also released its 2010-2014 proposed Capital Program. You may view this plan on the MTA's website at www.mta.info. Helena Williams, the MTA Interim Executive Director and Chief Executive Officer, has written to LICA informing us that her agency plans to hold a briefing with industry leaders before the proposal is formally presented to the MTA board next month. We will encourage the LICA members to participate once the date is set.

GCA Hosts Bid Express Demo

Our sister association, the General Contractors Association of New York City (GCA), is graciously extending an invitation to LICA member firms to attend its forum on "Bid Express."

The New York State Department of Transportation is strongly encouraging bidders to submit proposals electronically. We believe this technology will become the industry standard relatively soon. LICA suggests its members maintain their competitive edge and take advantage of what may be learned at the GCA forum.

NYS DOT and Info Tech will give this presentation on Bid Express and the subcontractor bid solicitation feature on Wednesday, September 23rd from 10am until noon. This session will be held at the GCA offices, 60 East 42nd Street (Lincoln Building diagonally across from Grand Central Terminal), Suite 3510, New York City.

For more information, please contact Felice Farber of the GCA at ffarber@gcany.net or 212-687-3131.

Forum on Future of LI Transportation Set for Sept. 25th

LICA is lending its assistance and support in organizing a conference entitled, "New Technologies in Transportation: The Future of Long Island." Action Long Island, a regional business advocacy group, to which LICA belongs, is sponsoring this forum on September 25th, 8:00am - 10:30am at Hofstra University.

Informative presentations will be made on the following topics:

- "East Side Access"
- "Next Generation Satellite Air Traffic Control"
- "MAGLEV"
- "Smart Transit"

These technologies and programs will present the need for new and improved infrastructure for the Long Island region. We encourage LICA members to participate. For more information, please [click here](#).

Bid Results

Bid Date	Project Name	Owner	Contractor	Bid Amount
8/3/09	Old Nichols Rd & Blydenburgh Rd Improvement	Village of Islandia	J Anthony Enterprises	\$676,457
			Suffolk Asphalt	\$678,828
			Intercounty Paving Associates, LLC	\$719,000
			Pioneer Landscaping & Asphalt Paving, Inc.	\$726,845
			Kings Park Industries, Inc.	\$777,870
			Newborn Construction, Inc.	\$786,345
			Powell Paving	\$790,179
			Pratt Brothers, Inc.	\$869,869
			ALAC Contracting Corp.	\$911,911
			Rosemar Construction	\$998,899
8/4/09	Install Water Mains @ Elm Sea Lane Transmission Main	Manhasset-Lakeville Water District	G & M Earth Moving, Inc.	\$268,275
			Roy Wasner, Inc.	\$303,000
			Bancker Construction Corp.	\$305,675
			Merrick Utility Associates Inc.	\$374,300
			Elmore Associates Inc.	\$493,699
8/6/09	Road Improvements	Town of Hempstead	Stasi Brothers Asphalt Corp.	\$706,925
			Newborn Construction, Inc.	\$735,246
			Intercounty Paving Associates, LLC	\$744,025
			ALAC Contracting Corp.	\$777,777
8/11/09	Reconstruct West Chester & East Market Streets	City of Long Beach	Allen Industries Inc.	\$1,286,450
			Araz Industries	\$1,290,000
			PSL Industries, Inc.	\$1,622,775
			Newborn Construction, Inc.	\$1,645,237
			ALAC Contracting Corp.	\$2,929,292
8/11/09	Traffic Calming & Reconstruction of Prospect Avenue	Town of North Hempstead	J Anthony Enterprises	\$5,384,717
			Intercounty Paving Associates, LLC	\$5,439,847
			Newborn Construction, Inc.	\$5,764,321
			New York Paving Inc.	\$5,866,786
			Galvin Brothers, Inc.	\$6,357,672
			Superior Sitework Inc./Diversified	\$6,831,142
8/12/09	2009 Drain & Road Program, Phase 2	Village of Old Brookville	Intercounty Paving Associates, LLC	\$749,546
			John McGowan & Son	\$848,573
			Superior Sitework Inc./Diversified	\$884,150
8/13/09	Replacement of INFORM VMS Signs	NYS DOT	Welsbach Electric of Long Island	\$2,362,200
			Hinck Electrical Contracting, Inc.	\$2,827,332
			Johnson Electrical Construction	\$2,832,650
			Eldor Contracting	\$3,123,741
			Hylan Datacom & Electrical	\$3,463,720
			ALAC Contracting Corp.	\$4,040,404
8/13/09	Reconditioning & Preservation of CR 4	Suffolk County DPW	Base Bid:	
			Intercounty Paving Associates, LLC	\$2,166,010
			Kings Park Industries Inc.	\$2,796,850
			Pioneer Landscaping & Asphalt Paving Inc.	\$2,846,809
			Posillico Civil Inc.	\$2,973,065
			Pratt Brothers Inc.	\$3,015,510
			Bi County Construction Corp	\$3,065,345
			ALAC Contracting Corp.	\$3,333,333
			Alt. A	
			Intercounty Paving Associates, LLC	\$2,431,010
			Kings Park Industries Inc.	\$3,086,900
			Pioneer Landscaping & Asphalt Paving Inc.	\$3,141,159
			Posillico Civil Inc.	\$3,257,740
			Pratt Brothers Inc.	\$3,323,475
			Bi County Construction Corp	\$3,354,695
			ALAC Contracting Corp.	\$3,621,744
			Alt. B	
			Intercounty Paving Associates, LLC	\$2,238,010
			Kings Park Industries Inc.	\$2,874,625
			Pioneer Landscaping & Asphalt Paving Inc.	\$2,911,159
			Posillico Civil Inc.	\$3,051,640
			Pratt Brothers Inc.	\$3,086,720
			Bi County Construction Corp	\$3,132,235
			ALAC Contracting Corp.	\$3,409,284
8/13/09	Track Reconstruction @ James H. Vernon School	Oyster Bay-East Norwich Central School District	De Rosa Tennis Contractors	\$349,697
			Watral Brothers Inc.	\$381,600
			H & A Landscape of Long Island	\$405,000
			Pioneer Landscaping & Asphalt Paving Inc.	\$408,230
			Eagle Asphalt Maintenance/KJB Ind	\$420,024
			Landtek Group Inc.	\$420,250
			Fasco Asphalt Paving	\$447,900
			Araz Industries	\$472,111
			Laser Industries	\$479,974
			J. Barwick Landscape	\$560,000
			Hellas Construction	\$633,100
8/13/09	Install Water Mains & Appurt @ Spring Hill Farms	Village of Old Westbury	Pat Noto Inc.	\$553,450
			Merrick Utility Associates Inc.	\$599,360
			Alessio Pipe & Construction	\$609,345
			Elmore Associates Inc.	\$640,424
			Bancker Construction Corp.	\$651,500

CLICK HERE to view our latest photo gallery from the June 17 press conference in Albany

